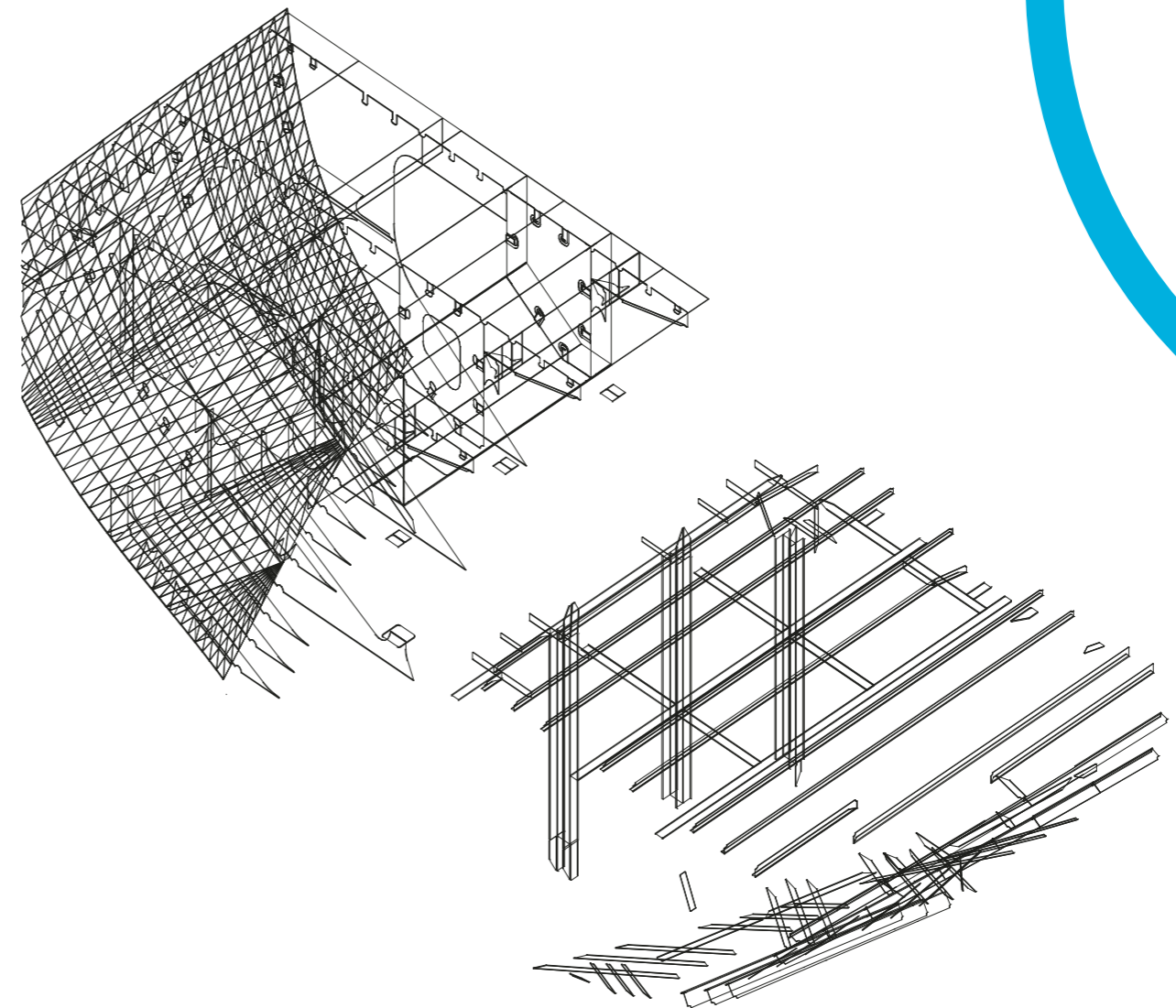


HULL MODELING/ DRAWING

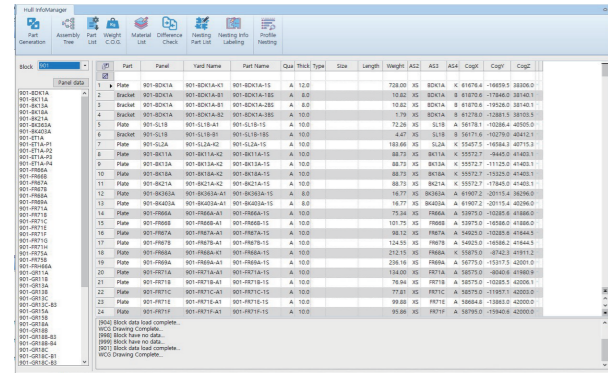
CAD Development Company

Hull Info. Manager | Hole Manager



Hull Product Software

◆ Hull Info. Manager (Software: AVEVA MARINE)



◆ Benefit



Cost Reduction

- Improved productivity with increased work speed



Improved Work Efficiency

- Enhanced convenience with minimal touchups
- Convenient use based on an interface for each work process for the hull
- Reduced time by creating BOM files automatically
- Improved productivity with automatic production of hull nesting drawings
- Increased efficiency and consistency based on comparative checking of model quantity and drawing quantity
- Easily managed by the administrator

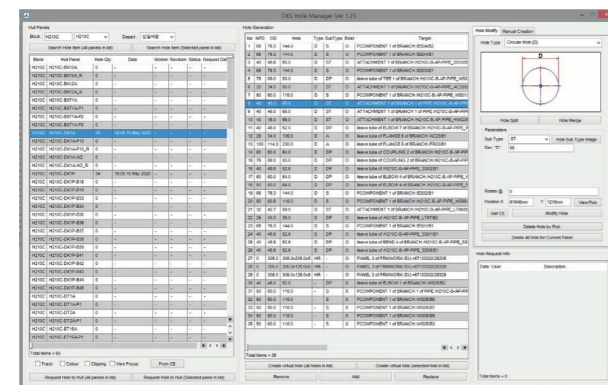
◆ Program Features

- Convenient user interface
- Easy sub-material sorting by search term
- Automatic creation of assembly weight
- Profile auto nesting and editing features
- Convenient production of profile nesting and profile detail drawings
- Convenient project management using the administrative interface
- Comparative checking of model quantity and drawings and report creation features
- Convenient production of quantity information on sub-material and materials in Excel
- Fast and easy sub-material extraction
- Fast and convenient assembly tree editing
- Automatic creation of plate nesting drawings

◆ Program Functions

- Part Generation
- Assembly Tree
- Part Lis
- Weight C.O.G
- Material List
- Difference Check
- Option
- Profile Nesting
- Nesting Info Labeling
- Nesting Part List-Plate Nesting

◆ Hole Manager (Software: AVEVA MARINE)



◆ Benefit



Cost Reduction

- Improved productivity through automatic hole search and generation
- Improved consistency and cost reduction by preventing incorrect operation



Improved Work Efficiency

- Enhanced convenience with minimal touchups
- Convenient use based on an interface for each work process for the hull
- Reduced time by creating BOM files automatically
- Improved productivity with automatic production of hull nesting drawings
- Increased efficiency and consistency based on comparative checking of model quantity and drawing quantity
- Easily managed by the administrator

◆ Program Features

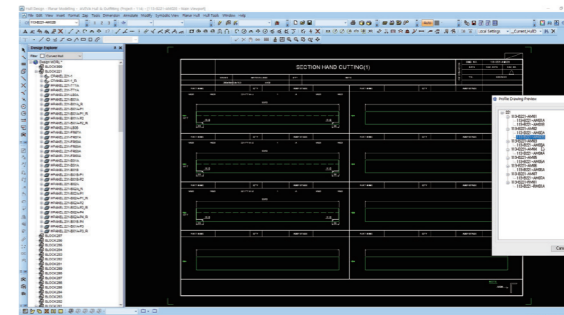
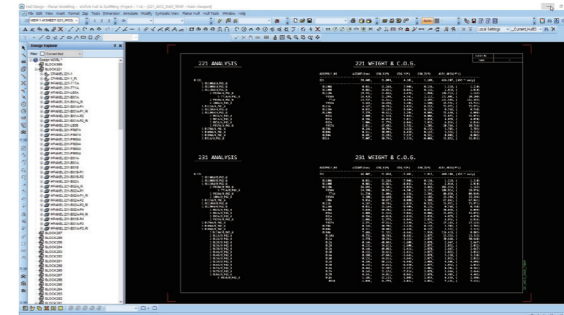
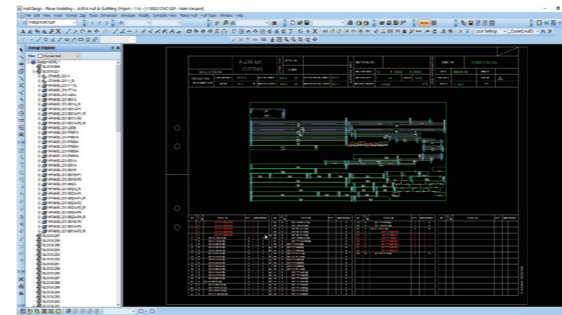
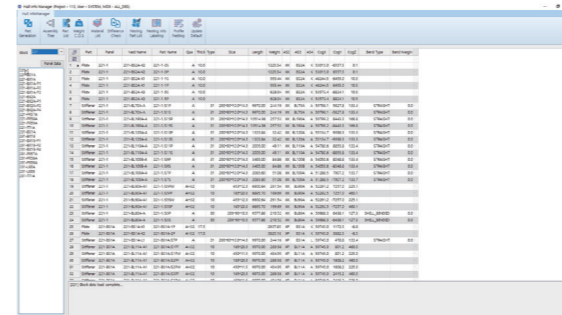
- Convenient user interface
- Manual creation of virtual holes
- Virtual hole deletion request to Hull team
- Creation of Virtual holes by Hull team
- Rejection and deletion of virtual holes by Hull team
- Batch processing of outfitting virtual holes creation
- Automatic hole location and type search by panel and department
- Review the hull holes through the symbolic view
- Easy modification of outfitting virtual hole size, type, merge, split, etc
- Virtual hole inquiry for each panel
- Virtual hole request to Hull team
- Virtual hole history check function

◆ Program Functions

- Hole Search
- Create Virtual Hole
- Modify Hole
- Manual Hole
- Request Hole to Hull
- Hole Request Info
- Hull Hole Manager

Product UI [User Interface]

◆ Hull Info. Manager (Software: AVEVA MARINE)



◆ Hole Manager (Software: AVEVA MARINE)

